



THE BANKS & FIELDS AT

Planter's RIDGE



Planter's Ridge

RIDGE

- Planter's Ridge is located in Kathleen, GA is zoned for:
- Matt Arthur Elementary
 - Perry Middle School
 - Veterans High School

- The Acres
- The Hallows
- The Banks
- The Fields



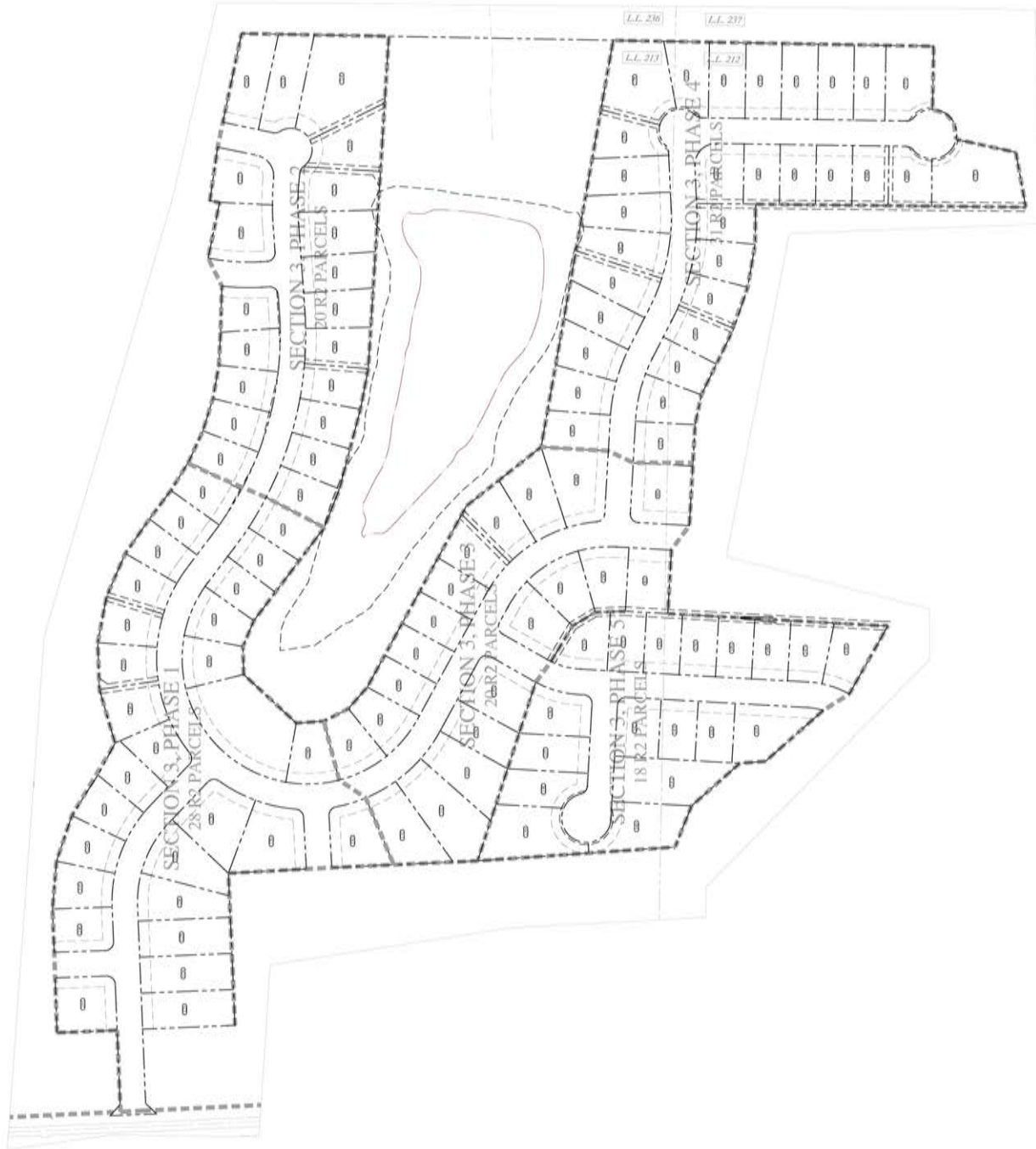
NOTE:
TEMPORARY CUL-DE-SACS WILL BE REQUIRED BETWEEN PHASING IF THEY CREATE A TEMPORARY DEAD-END STREET.

Planter's RIDGE

PLANNED AMENITY AREA WITH OUTDOOR
PAVILION, MULTI-AGE PLAYGROUND, SPLASH PAD,
AND GREEN SPACE OVERLOOKING BEAUTIFUL
TALTON POND



THE BANKS AT
Planter's
RIDGE



THE BANKS AT PLANTER'S RIDGE

THE BANKS AT *Planter's* RIDGE



Starting in the High \$300's!

\$3000 Lender Credit when you use our preferred Lender!

THE EMORY

AT THE BANKS AT PLANTER'S RIDGE



OPTION A



OPTION B



5 BEDROOMS 2529 SQFT

THE EVERLY

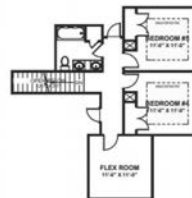
AT THE BANKS AT PLANTER'S RIDGE



OPTION A



OPTION B



5 BEDROOMS STUDY FLEX ROOM 2529 SQFT

THE HARLOW

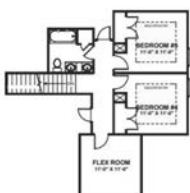
AT THE BANKS AT PLANTER'S RIDGE



OPTION A



OPTION B



5 BEDROOMS FLEX ROOM 2403SQFT

THE NOVA

AT THE BANKS AT PLANTER'S RIDGE



OPTION A



OPTION B



5 BEDROOMS 2529SQFT





THE FIELDS AT
Planter's
RIDGE



THE FIELDS AT PLANTER'S RIDGE

THE FIELDS AT *Planter's* RIDGE



Starting in the low \$300's!

\$2500 Lender Credit when you use our preferred Lender!

THE ALPINE

AT THE FIELDS AT PLANTER'S RIDGE

OPTION A



OPTION B



OPTION C



OPTIONAL FLEX SPACE



4 BEDROOMS 1769 SQFT

THE AMORA

AT THE FIELDS AT PLANTER'S RIDGE

OPTION A



OPTION B



OPTION C



4 BEDROOMS 1947 SQFT

THE APILLA

AT THE FIELDS AT PLANTER'S RIDGE

OPTION A



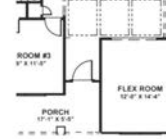
OPTION B



OPTION C



OPTIONAL FLEX SPACE



4 BEDROOMS 1857 SQFT

THE LENNON

AT THE FIELDS AT PLANTER'S RIDGE

OPTION A



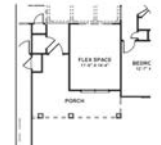
OPTION B



OPTION C



OPTIONAL FLEX SPACE



4 BEDROOMS 1856 SQFT

THE MEMPHIS

AT THE FIELDS AT PLANTER'S RIDGE

OPTION A



OPTION B



OPTION C



OPTIONAL FLEX SPACE



4 BEDROOMS 1769 SQFT

THE SIMON

AT THE FIELDS AT PLANTER'S RIDGE

OPTION A



OPTION B



OPTION C



4 BEDROOMS 1951 SQFT

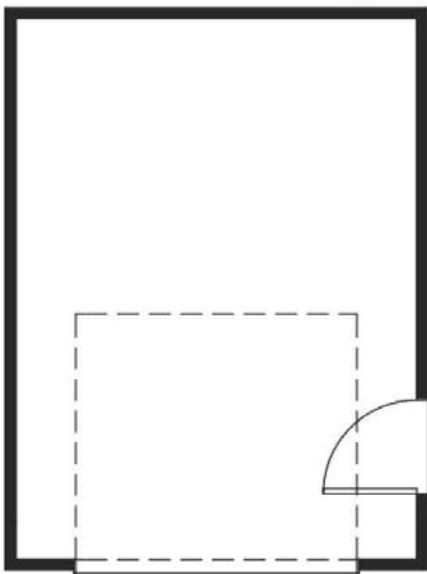


Planter's RIDGE

Shops can be added at an additional price!
See below to see the shop we offer!

STANDARD SHOP

AT PLANTER'S RIDGE



12' X 16'

Our PROCESS



1

Meeting our clients

After making the decision to build a new home, you will speak to one of our representatives who will help you decide what your budget is and where exactly you want to build. We have 5 realtors who can help make this process easy and can answer any questions and concerns you have about building your new home.



2

Selecting a Lot and Creating Your Dream Home

After deciding where you'd like to build, you will be able to select the floor plan and lot that you want and work with our designers about everything you want in a home. From exterior to interior, you make every decision on what you want for your dream home. After you've made your selections, you sit back while we build your home. Your realtor will be able to keep you updated on the progress and any questions you have.



3

Closing on Your New Home

Your house is built and it's time to get your keys and close. You will be provided with a closing folder filled with info about your home, keep this folder to refer back to as you may need to know the color of your walls in a few years. All contact information will be provided in the folder for any future need.

Your home is finished and now you can relax... after you move in and unpack everything, of course.



Misty Wingate



WRG
Real Estate

☎ 478-256-0395

✉ mwingate73@gmail.com



Ashleigh Haller



☎ 478-918-5400

✉ ashleigh@thehallerteam.com



Ilia Durham



SCAN ME



☎ 478-808-1298

✉ iliadurham.realtor.com



Ceirra Johnson



SCAN ME



☎ 478-390-5832

✉ ceirra@sayyes2theaddress.com



Ann Edwards



SCAN ME



☎ 478-973-6333

✉ amenewhomes@gmail.com



Cindy Lasseter-Gibbs



☎ 478-951-3317

✉ cindylassetergibbs@gmail.com

Meet **OUR TEAM**



Our

LENDERS OF CHOICE

When buying a home with WCH, you have the freedom of choosing your own lender, but we can also help you.

We offer a \$2500 + Lender Credit, to be applied towards closing costs., when you choose one of our preferred lenders. Ask one of our team members about the Lender Credit!



"My name is Melissa Gibson, and I am proud to work with the community. As a highly-skilled Lender, NMLS #279702, my goal is to provide the best customer service possible along with knowledgeable, unbiased advice."



Melissa Gibson
Middle GA Market Leader | NMLS #279702
☎ 770-337-8089
✉ melissa.gibson@academymortgage.com



"World class customer service while providing the industry's smoothest closing process"



Hunter Phillips
Sr. Mortgage Loan Offer | NMLS #2351255
☎ 478-330-1211
✉ hunter.phillips@supremelending.com



Planter's RIDGE



Let's stay in touch

WCH Homes
817 GA-247, S
Unit #10
Kathleen, GA 31047
478-322-0028
www.wchhome.com

